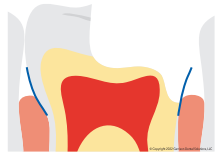


Introducing >

The **NEW** Deep Margin Elevation Kit


Predictably relocate deep margins for better final restorations. The conservative deep margin elevation procedure allows for the maximum conservation of natural tooth structure while helping to avoid more invasive procedures such as crown lengthening. Relocated supragingival margins facilitate easier scanning/impressions and proper isolation for improved bonding of inlays, onlays and direct final restorations.

Reel Tight:
Extra-narrow enhanced conical design slides subgingivally to properly seal deep margins.

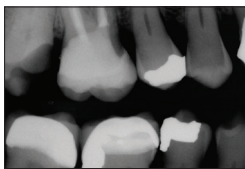


Reel Easy:
Lightweight retainerless delivery system makes placement and tightening simple.

Reel Fast:
Pre-loaded reels and removable application handle mean rapid deployment and maximum access.



Clinical Case: The margin elevation technique allows proper isolation and elevation of deep margin areas prior to restoring with an indirect partial coverage restoration (inlay or onlay). The use of the Garrison® Reel Matrix™ margin elevation band allows proper adaptation and seal of these deep areas so that a composite margin elevation can be performed.



Pre-op X-ray shows the margin location for #2 subgingivally prior to elevation.



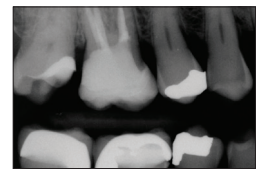
Seat the margin elevation band subgingivally. The narrowness of the matrix will allow it to slide subgingivally and seal the margin efficiently.



Seal the dentin and elevate the deep margin with restorative composite.



Remove the matrix and finish with a #12 blade to remove any flash. The deep margin has been relocated 1-2 mm supragingival for predictable isolation and delivery of an indirect bonded restoration.



Post-op X-ray shows the completed margin elevation prior to final restoration being completed.

Photos courtesy of Matthew A. Nejad DDS, Beverly Hills, CA

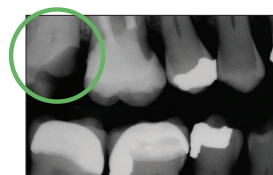
DME-01 Kit



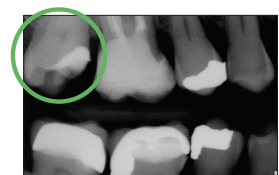
DME-01 contains:

- 5x FXH150 3D Fusion™ Firm bands
- 10x FXH200 3D Fusion™ Firm bands
- 20x FXH300 3D Fusion™ Firm bands
- 50x RM500H Margin Elevation band reels
- 1x RMH-100 Reel Matrix™ tensioning instrument
- 20x FXYL 3D Fusion™ wedges
- 20x FXBL 3D Fusion™ wedges
- 20x FXOR 3D Fusion™ wedges
- 20x FXGR 3D Fusion™ wedges

Predictably build a strong foundation!



Extra deep restorations are a significant challenge.



Relocate the margin with confidence!

AUSTRALIA



www.henryschein.com.au
Orders: 1 300 65 88 22

NEW ZEALAND



www.henryschein.co.nz
Orders: 0800 808 855



General inquires about Garrison products contact Gina at email gdavies@garrisdental.com
+61 416 232 252 • gds@garrisdental.com • www.garrisdental.com.